

# Match me

## WITH MY WHEELS

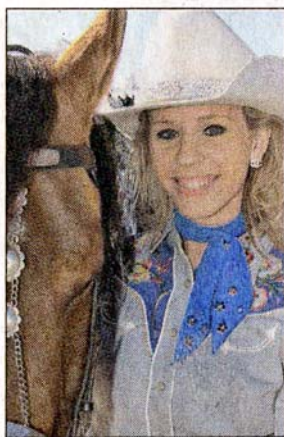
Each week, we feature three Valley leaders, celebrities, sports figures or business people to see whether you can match them to their personal vehicles. This week, we surveyed three Arizona members of the Cowgirls Historical Foundation, who recently appeared in the Pasadena Tournament of Roses Parade, to find out what they drive when they're not riding horses and dressed in vintage Western duds.

The photos are not of their actual vehicles, except for the Camaro, but are of vehicles of the same year, make and model.

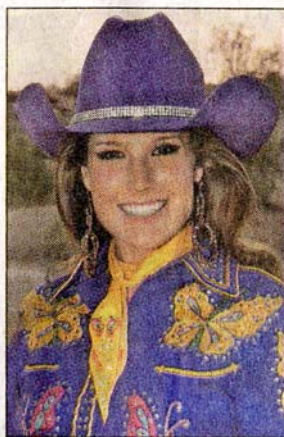
Find the answers on **CL2**.



**Amanda Gomez**, a college student and Tempe resident who drives a lot, says of her vehicle: "It's very smooth when I drive it.... And I like the style of it."



**Chelsea Neese**, a preschool teacher and Tempe resident, loves how the power of her vehicle is a counterpoint to her favorite girlie palomino, Silky: "It's so dramatic. It's like an eye grabber, and it's so fun."



**Kelsee Brady-Bradshaw**, a Western-themed-event planner and Coolidge resident, feels the same freedom driving her vehicle as she does riding: "Being involved in rodeo, I love to go fast and I'm not afraid to go fast, not that I break the law ever. I'm not promoting that."